

# Crown Relocations

Press Kit



*Go knowing*  
[www.crownrelo.com](http://www.crownrelo.com)

# About Crown Relocations



With more than 200 locations in over 50 countries, Crown Relocations understands the importance of providing services that go far beyond packing and moving personal effects. Today, those who relocate and those who are managing relocation programs need industry experts who understand the complexities of domestic and international relocations. Serving corporations, diplomats and private customers, Crown's team of expert professionals have the unique experience required to provide high-quality international and domestic mobility services.

- Domestic and international moving services
- Secure storage facilities
- CrownCare protection programs
- Destination settling-in services
- Employee and family support, including Global Passport®, Global Career® and language training
- Immigration services



# About Crown Worldwide Group

## July 2018 Fast Facts



### Founder and Chairman:

James E. Thompson

### Executive Board:

CEO APAC and Group Chief Financial Officer

Ken Madrid

CEO EMEA and Chief Strategy Officer

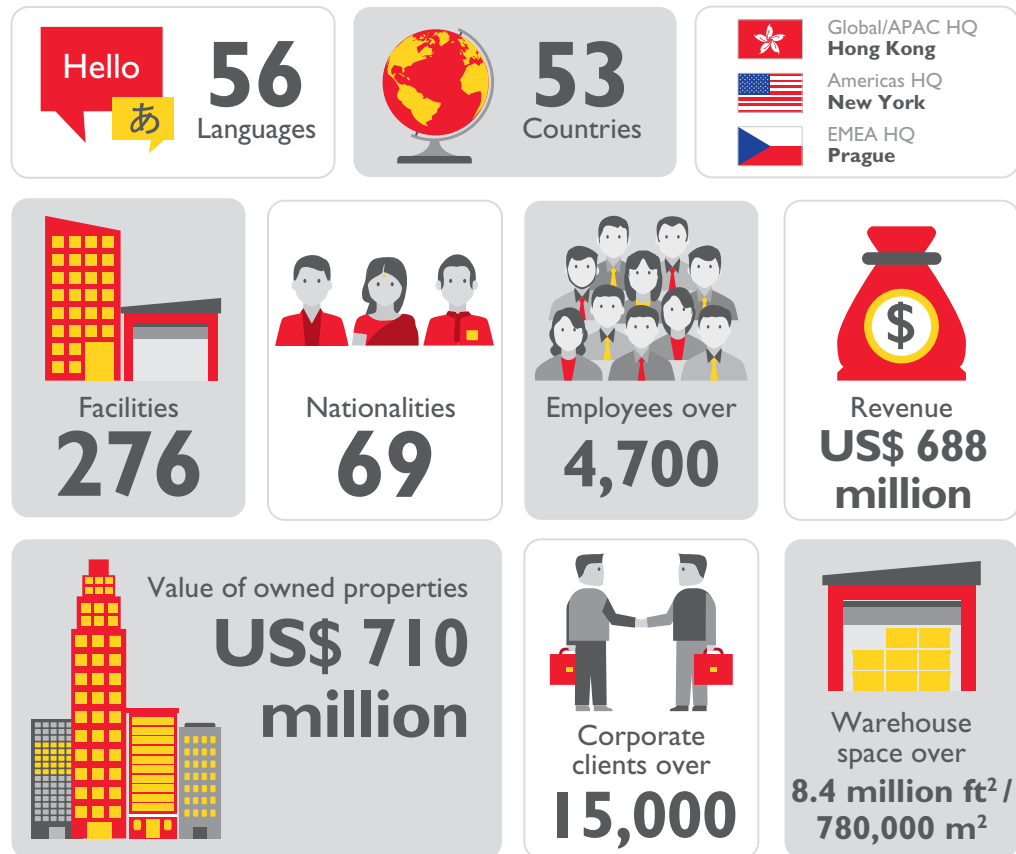
Barry Koolen

CEO Americas

Jennifer Harvey

Privately held company

Established in 1965



# About Crown Relocations

## July 2018 Fast Facts






Privately held company

**Established in 1965**

Hello  
あ  
**56**  
Languages

  
**53**  
Countries

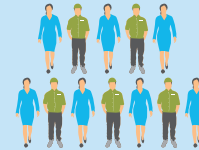
 Global/APAC HQ  
Hong Kong  
 Americas HQ  
New York  
 EMEA HQ  
Prague



Facilities  
**204**



Nationalities  
**54**



Employees  
**1,473**



**17,000**  
relocations per year



Over  
**2.6 million ft<sup>2</sup> /  
240,000 m<sup>2</sup>**  
warehouse space

# Crown Worldwide Group's divisions



[www.crownrms.com](http://www.crownrms.com)

## Records Management

- Document and information storage (hard copy information)
- Document and information management
- Magnetic media and vault storage (tapes, microfilm and items that need special conditions for storage or which are rare, valuable or highly confidential)
- Magnetic media and vault management
- Digital archive storage (electronic data: the virtual world hosting)
- Digital archive management
- Digital imaging (scanning)
- Data conversion (hard copy to soft copy changing formats)
- Information consultancy services
- Secure data destruction



[www.crownworldmobility.com](http://www.crownworldmobility.com)

## World Mobility

- Consulting Services
- Program Administration
- Global Visa and Immigration Services
- Global Skills Services
- Financial and Compensation Services
- Destination Services
- Moving Services
- Home Sale and Home Finding Services
- FLEX – Self Service Tool
- Supply Chain Management



[www.crownrelo.com](http://www.crownrelo.com)

## Relocations

- Domestic and international moving services
- Pet relocations
- On-line tracking tools
- Secure storage facilities
- CrownCare Transit Protection
- Destination settling-in and departure services
- Employee and family support (Education, Intercultural, Language and Partner Support)
- Immigration services



[www.crownworkspace.com](http://www.crownworkspace.com)

## Workspace

- Space Planning
- Design
- Office Fit Out
- Move Management
- Furniture
- Information Management



[www.crownfineart.com](http://www.crownfineart.com)

## Fine Art

- Conservation
- Consultancy
- Exhibition logistics
- Packing and crating
- Staffing solutions
- Fine art shipping and transportation
- Secure storage
- Installation and de-installation
- Gallery logistics



[www.crown-logistics.com](http://www.crown-logistics.com)

## Logistics

- International freight forwarding
- Energy logistics
- Third-party logistics
- Furniture, fixtures and equipment



[www.crownwinecellars.com](http://www.crownwinecellars.com)

## Wine Cellars

- Wine storage and long-term maturation in underground cellars
- Exclusive private members' club house

# Crown Worldwide Group's Chairman



James E. Thompson is Chairman of the Crown Worldwide Group. In 1965, he founded the company in Yokohama, Japan. Today, Crown employs close to 5,000 people in 53 countries and is the market leader in relocation, mobility, information management, fine art transportation and logistics, which includes oil and gas project management as well as luxury goods warehousing and distribution.

Mr. Thompson has received numerous accolades for demonstrating business growth with a commitment to corporate social responsibility. In 2003 he was awarded Hong Kong's Gold Bauhinia Star, an award only given to a select few

in Hong Kong society that recognizes involvement and support of Hong Kong's local communities. In addition to his work with several prestigious organizations, Mr. Thompson has served as a delegate representing Hong Kong on the Hong Kong Trade Development Council's trade missions around the world.

In addition to Crown, Mr. Thompson serves as a Board member for several prominent industry organizations. Known for his philanthropy, he also serves with a number of charitable organizations and university mentorship programs. He and his wife Sally are especially interested in charities that focus on children's health and education.



# Contact information



Please visit our Press Center at [www.crownfineart.com](http://www.crownfineart.com) where you can read our latest press releases, news, market insights and resources. Learn more about our industry experts, who are available for interviews and speaking engagements. We encourage the media to visit our website and welcome the use of our pictures, articles and stories in the press.

## Headquarters:

### Global and Asia-Pacific:

Crown Worldwide Holdings Limited  
Suite 2001, China Evergrande Centre  
38 Gloucester Road, Wan Chai  
Hong Kong  
Tel: +852 2528 6111  
[holdings@crownew.com](mailto:holdings@crownew.com)

### Americas:

Crown Group  
200 Mac Lane, Keasbey  
New Jersey 08832  
United States  
Tel: +1 800 879 3326  
[americas@crownew.com](mailto:americas@crownew.com)

### Europe/Middle East/Africa:

Crown Worldwide Group  
IBC – Pobrezni 3, Praha 8, 186 00  
Prague, Czech Republic  
Tel: +420 2 2483 2301  
[emea@crownew.com](mailto:emea@crownew.com)

## Media contacts:

*When you get in touch, please provide us with your details including your name, email, a brief description of your inquiry and any other relevant information.*

### Crown Communications

Crown Worldwide  
345 Southbury Road,  
Enfield, EN1 1TW  
England  
[communications@crownew.com](mailto:communications@crownew.com)

## Crown websites:

### Crown Worldwide

[www.crownworldwide.com](http://www.crownworldwide.com)

### Crown Fine Art

[www.crownfineart.com](http://www.crownfineart.com)

### Crown Relocations

[www.crownrelo.com](http://www.crownrelo.com)

### Crown Records Management

[www.crownrms.com](http://www.crownrms.com)

### Crown World Mobility

[www.crownworldmobility.com](http://www.crownworldmobility.com)

### Crown Workspace

[www.crownworkspace.com](http://www.crownworkspace.com)

### Crown Logistics

[www.crown-logistics.com](http://www.crown-logistics.com)

### Crown Wine Cellars

[www.crownwinecellars.com](http://www.crownwinecellars.com)