

# Education Guide Australia

2017

A comprehensive guide  
to schooling in Australia

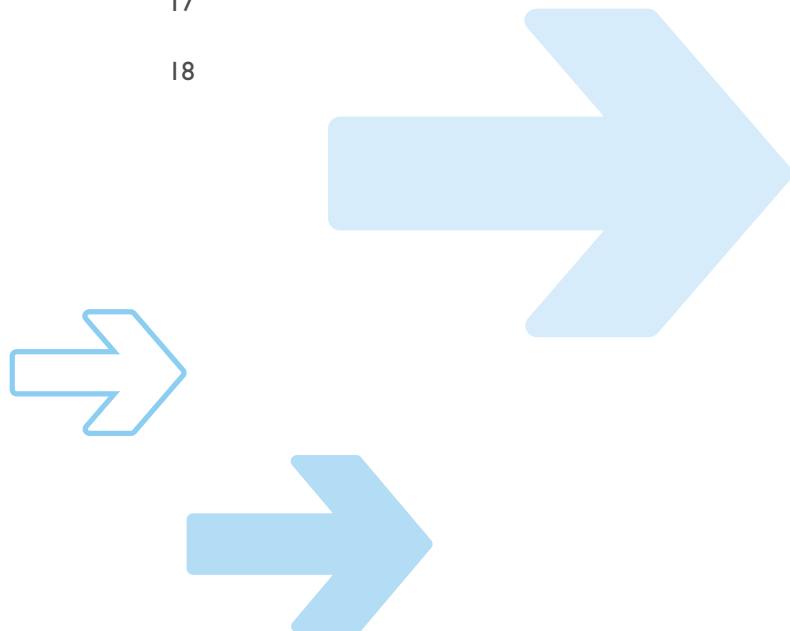


*Go knowing*

**CROWN**   
RELOCATIONS

# Table of contents

Introduction	3
School Options	4
School Grades	7
Stages of Schooling	8
National Curriculum	10
Alternative Curriculum	11
Additional Details	13
Fees for 457 Visa Holders	15
Making a Choice	16
Challenges	16
Enrolment Process	17
Crown School Search	17
Appendix A	18



*\*Note: This document has been prepared by Crown Relocations for general information only. Crown Relocations makes no guarantees, representations or warranties of any kind, express or implied, regarding the information including, but not limited to, warranties of content, representations or warranties of accuracy and reliability.*

# Introduction

Schooling in Australia starts with a Kindergarten or Preparatory year, followed by 12 years of primary and secondary school. Children typically begin school by 5 or 6 years old, and complete their schooling by 17 or 18 years old.

The commonality in education throughout Australia is increasing through the implementation and staged roll-out of the new national curriculum from Prep to Year 12. However, until this progressive implementation is achieved, there will continue to be some variation in actual implementation of the curriculum, delivery modes and school frameworks between States and Territories.

In addition to the State and Territories government funded schools, there are also other providers. Typically there are three main education providers in each state:

- The State Government system
- The Catholic Education system and
- The Independent School sector

In terms of curriculum offerings and assessment frameworks, most schools in the Catholic and Independent Sectors align their curriculum and assessment deliveries to the national guidelines. They can however, exercise a degree of flexibility beyond that of government schools. Because of the generally high degree of commonality between State, Catholic and Independent Schools, students in Australia can move comfortably from one system to another, generally with minimal adjustment.

Government schools are often called “State Schools” or “Public Schools” and Non-Government schools are often called “Private Schools” (This terminology may vary from state to state).

The school year starts at the end of January and finishes in December. The school day starts between 8:30–9:00 AM and ends between 3:00–3:30 PM Monday to Friday. Class sizes vary but can be between 20 and 35 with the average being about 30.



# School options

## Government Schools

In 2012 the total number of students in Australian Schools exceeded 3.5 million, with 2.3 million of those attending Government schools, compared with 700,000 at Catholic schools and 500,000 at independent schools. Government schools generally are described as “free education”, though there are usually levies imposed on each student per year, varying from approximately \$50–\$300 per year in Primary Schools to \$250–\$800 per year in secondary schools, (depending on the programmes offered). These fees may be increased by additional charges for excursions, excellence programmes and other optional activities individual students choose to pursue.

In the case of 457 visa holders, some States charge additional fees which are outlined in Section 8. These fees imposed by State Departments of Education generally cover (i) access to a government school; (ii) all teaching costs; (iii) ESL – English as a Second Language - support, though this varies on a State by State basis.

All government schools are non-denominational and most government schools are co-educational.

Government schools service all areas of Australia from remote to city locations. Schools vary in size in the primary sector (Prep to Year 6 or 7 – State variation) from “one teacher schools” in country locations with a school population of around 10 students across all levels, up to much larger schools servicing up to 1000 students in some city locations.

In the secondary sector (Year 6 or 7 to Year 12), schools range in size from 100–200 students in country areas, up to more than a 1000 students in larger city locations.

Generally, the Primary and Secondary schools operate separately from their own campuses, however, in smaller country towns Prep – Year 10 may be combined to optimize resourcing. These schools would generally have low enrolments.

State Education also offers a School of Distance Education with on-line programmes and links to centrally-based teachers for those students who reside in very remote locations and cannot access a school. It is a requirement that students participate in schooling if of compulsory school age. See Section 4 for details.

For children younger than official school age there are options in all States for access to non-compulsory early childhood programmes offered by private providers or local councils. These programmes are generally delivered on a part-time basis with an emphasis on socialisation and play-based learning, rather than a formal education programme. The intake age for these programmes can be determined by individual centres; however, children generally need to be 3 years old to be accepted. Such programmes may be referred to as Kindergarten or Pre-school (the definition of these terms varies amongst States).

**Access to these programmes requires payment of fees.**

## Catholic Schools

By contrast to government schools, both the Catholic and Independent school sectors do not offer “free education”. These schools attract significantly higher fees for tuition and these fees scale upwards into thousands of dollars per year per student, depending on the school, its offerings, its reputation and its student performance.

Catholic schools form the next largest sector after government schools, with around 21% of secondary enrolments. The Catholic system is also vast and accessible – sometimes even for those out of the habit of practising their faith. Most belong to a system, like government schools, and attempt to provide Catholic education consistent across the states through mainly co-educational schools. These schools are also known as systemic. Systemic Catholic schools are funded mainly by government and have low fees, ranging from \$600 to \$4,000 per annum. There are discounts available for families who have more than one student attending the school.

For more Sydney Systemic Catholic schools info go to [www.ceosyd.catholic.edu.au](http://www.ceosyd.catholic.edu.au)

There are also a substantial number of Independent Catholic schools, often single-sex, usually run by established religious orders, such as the Sisters of Mercy or the Christian Brothers. Independent Catholic school fees vary, ranging from low to high. In many cities these schools rank in fees along side the most expensive private schools.

Catholic schools, both systemic and independent, proclaim strong religious motivations and most often the majority of their staff and students will be Catholic.

There are also fee variations on an individual school basis according to whether the student has Permanent Domestic Residency Status, or whether attendance is under a Short or Long Term Stay Visa.

## Independent Schools

Most independent/private schools have a religious affiliation and most typically in Australia, are, other than Catholic schools, Anglican, Uniting, Presbyterian, Lutheran or Adventist. They are most commonly found in cities and larger regional centres. The incidence of Catholic and Independent Schools decreases into country areas with increasing remoteness from larger cities and towns. In many schools in the Private Sector, Primary and Secondary levels may be combined onto a single campus.

Schools with a religious affiliation vary in their eligibility requirements for attendees. Some give preference to adherents of their beliefs. Other schools are open to all regardless of beliefs.

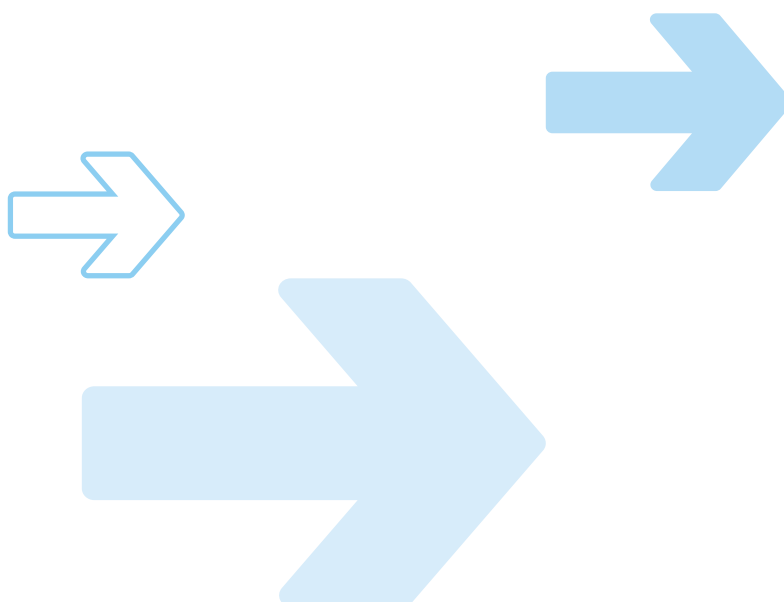
Demand for places in private schools is strong with many parents registering their children at birth in order to ensure placement.

There are also private schools without religious affiliations, though these are not as common. Some of these private schools offer alternative modes of delivery and function quite independently of State Education guidelines. Such schools may include the Montessori and Steiner schools with tailored, often individual, and sometimes extended programmes of learning. Such choices in education are offered in limited locations, generally on a small scale bases, and typically in the larger capital cities only.

The fee structure for private schools varies but as a general indicator, a primary student may pay from \$5,000 pa whilst an upper level secondary student can pay up to \$30,000 pa. In the private sector, there are co-educational and single-sex schools at both Primary and Secondary levels.

There are private schools where students can board to undertake their schooling and a boarding student will pay an additional \$9,000–\$15,000 per year. There may also be options of weekly boarding, so the student can go home at weekends.

Private schools must adhere to the compulsory school age requirements in each state, but they may have different birthday cut off dates to the government schools. e.g. in NSW the government school cut of date is 31st July but in many private schools the child must have achieved that particular age by May, or even March in some cases.



## International & Language based Schools

In the majority of cases, International Schooling is offered through the Private Sector, and whilst not exclusively, these schools generally follow the IB curriculum. Opportunities to attend these schools are restricted by their limited numbers and most are located in capital cities. Some examples are:

- The International School of WA  
[www.iswa.wa.edu.au](http://www.iswa.wa.edu.au)
- Kilmore International School, VIC  
[www.kilmore.vic.edu.au](http://www.kilmore.vic.edu.au)
- International Grammar School, NSW  
[www.igssyd.nsw.edu.au](http://www.igssyd.nsw.edu.au)

There is no single reference point to determine language based schools availability and location of language-based schools in Australia. There are a limited number of schools (confined to the capital cities) where curriculum can be offered in bi-lingual modes.

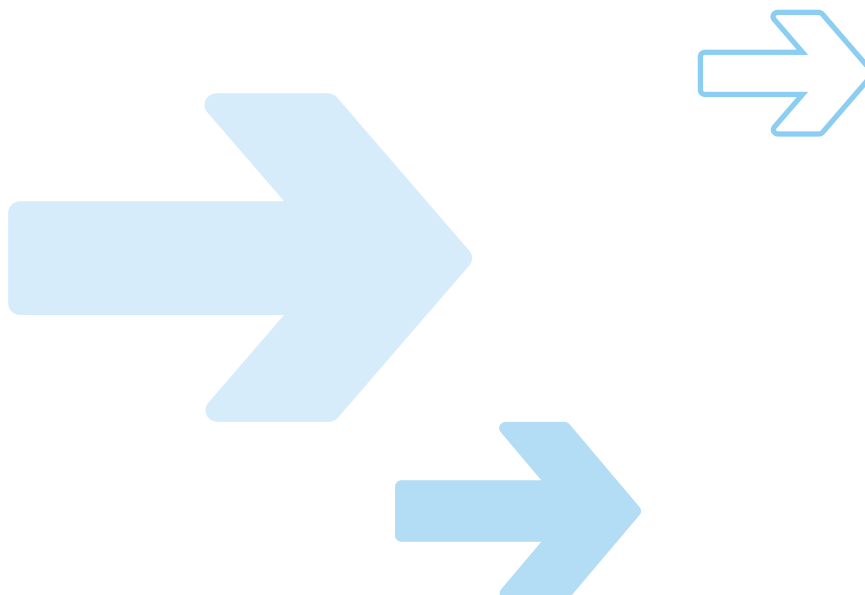
More typically, there are language-based programmes offered by various Private Sector providers where some instruction around development and consolidation of native languages can be accessed. This is often outside the general education framework, e.g. After school or during Saturday sessions.

In limited cases, there are bi-lingual programmes offered in conventional schooling frameworks.

Some Bi-Lingual Schools are:

- French  
[www.condorcet.com.au](http://www.condorcet.com.au)
- German  
[www.goethe.de](http://www.goethe.de)
- Japanese  
[www.sydneyjapaneseschool.nsw.edu.au](http://www.sydneyjapaneseschool.nsw.edu.au)
- Italian  
[www.ibs.nsw.edu.au](http://www.ibs.nsw.edu.au)
- Chinese  
[www.intcs.nsw.edu.au](http://www.intcs.nsw.edu.au)

To determine accessibility and opportunity for language-based education, schools offering particular languages need to be researched individually.



# School grades

Under the National Curriculum (ACARA) being developed, the first year of schooling will become known as “Foundation”.

State/Territory	Preparatory year (first year of school)	Month of and age at commencement for Year 1	Primary schooling	Secondary schooling	Minimum school leaving age
New South Wales	Kindergarten	January, 5 turning 6 by 31 July	Kindergarten Years 1–6	Years 7–12	15 years(a)
Victoria	Preparatory	January, 5 turning 6 by 30 April	Preparatory Years 1–6	Years 7–12	16 years(b)
Queensland	Preparatory	January, 5 turning 6 by 31 July	Preparatory Years 1–7	Years 8–12	17 years(d)
South Australia	Reception	January, 5 years 6 months by 1 January	Reception Years 1–7	Years 8–12	16 years(e)
Western Australia	Pre-primary	January, 5 turning 6 by 30 June	Pre-primary Years 1–7	Years 8–12	17 years(f)
Tasmania	Preparatory	January, turning 6 by 1 January	Preparatory Years 1–6	Years 7–12	17 years(g)
Northern Territory	Transition	January, 5 turning 6 by 30 June	Transition Years 1–6	Years 7–12	15 years(i)
Australian Capital Territory	Kindergarten	January, 5 turning 6 by 30 April	Kindergarten Years 1–6	Years 7–12	15 years(j)

- (a) From 2010 all NSW students must complete Year 10. After Year 10, students must be in school, in approved education or training, in full-time employment or in a combination of training and employment until they turn 17.
- (b) From 2010 all Victorian students are required to complete Year 10 and remain in some form of education, training or employment until the age of 17.
- (d) From 2006 Queensland students are required to participate in ‘learning or earning’ for two years after completing compulsory schooling, or until they turn 17 or until they attain a Senior Secondary Certificate or a Certificate III (or higher) vocational qualification.
- (e) From 2007 South Australian students who have turned 16 are required to remain at school or undertake an approved learning program until they turn 17 or gain a Senior Secondary Certificate or equivalent or a Certificate II (or higher) vocational qualification.
- (f) From 2008 Western Australian students are required to remain at school or undertake an approved combination of training and employment until the end of the year in which they turn 17.
- (g) From 2008 Tasmanian students are required to continue participating in education, training or full-time employment until they turn 17.
- (i) From January 2010, it will be compulsory for all Northern Territory students to complete Year 10 and then participate in education, training or employment until they turn 17.
- (j) From 2010 ACT students are required to complete Year 10 and then participate full time in education, training or employment until completing Year 12 or equivalent, or reaching age 17.

Sources: Australian Government Country Education Profile; States and Territories

# Stages of schooling

## Pre-prep

Around 3–4 years of age (with some variation from State to State as above), children may enter a non-compulsory period of attendance at a “Kindergarten” or “Pre-school” (there is variation in terminology from State to State).

These programmes follow guidelines based on this developmental age. They aim to build children’s confidence in their abilities, extend their communication skills, teach them to be creative and learn early literacy and numeracy concepts. The kindergarten programme is optional and families pay a fee for attendance to the provider. Some long day-care centres are also being funded to deliver approved kindergarten programmes using early childhood trained teachers.

## Pre (Foundation) – Primary – Secondary

Depending on the age of the child (and noting State to State variation), attendance to full-time Foundation schooling is not compulsory. Children enrolling in Foundation typically turn 5 during that year.

As a general rule, children turning 6 (Year 1) must be attending full-time schooling in all States. See table in previous Section on School Grades.

Students in states other than Queensland commonly remain in the Primary Sector until Year 6 (approximately 11 years of age) and enter the Secondary Sector for Year 7. Queensland has begun the process of moving students in Year 7 in primary schools onto secondary campuses for their Year 7 grade. This transition will continue throughout 2014. By 2015, it is intended that all Year 7 students will have moved from the primary sector to become part of the secondary schooling system.

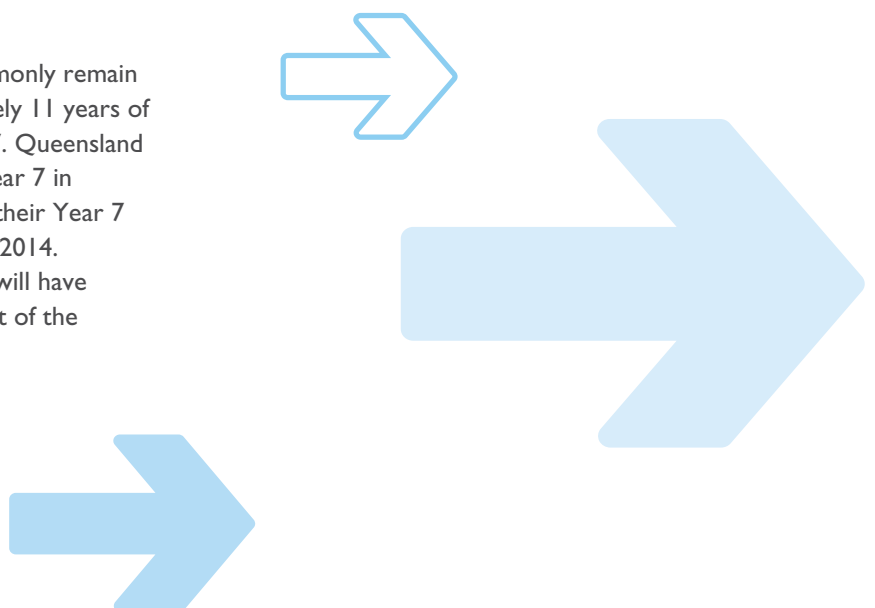
Students enter the secondary system at about 12 years of age and continue until Year 12 when they will be 17 or 18 depending on their state of origin and some individual variation.

There is a staged assessment system in place throughout Australia in all sectors of education – State and Private. Assessment begins in Primary School and continues into Secondary School.

**NAPLAN** – the National Assessment Programme in Literacy and Numeracy – is a bank of tests every school administers around May, each year. These tests are delivered at Year 3, Year 5, Year 7 and Year 9 levels. They are standardised tests covering Reading, Writing, Language Conventions (Grammar, Spelling and Punctuation) and Numeracy. Parents receive a copy of their child’s results and these results reflect a “point-in-time” performance. These results need to be meshed with other data collected within schools for any child’s overall performance and teachers provide this information in twice- yearly individual reports.

The NAPLAN tests are primarily used by schools to identify areas within their school where they may need to focus extra attention to improve student outcomes.

[www.nap.edu.au/about](http://www.nap.edu.au/about)





# Curriculum

Curriculum from Foundation to Year 10 (P–10) National Curriculum Guidelines dictate areas of study for all students from Foundation to Year 10. There are seven Key Learning Areas – English, Maths, Science, History, Geography, Health and Physical Education, Technology and the Arts. As a general rule, noting some variations, at Year 5 another KLA is introduced – Languages Other than English.

These Curriculum areas continue through to Year 10 with some increasing degree of choice, expanded by elective subjects being offered.

With the increasing focus on the National Curriculum and consistent testing throughout all Australian schools (NAPLAN), there have been changes to assessments at Year 10 level. Since 2012, School Certificates provided to students at Year 10, have been phased out. External State-wide exams for Year 10 students have been replaced with in-school assessments leading to Year 11/12 subject selections. With the raising of the exit age for students to 17, the focus has been placed on the final statements of results issued after Year 11, or Year 12.

## Curriculum in Years 11 and 12

Note: In some states, these final years of secondary schooling are offered from separate campuses – sometimes referred to as Senior Colleges. In some cases, these Colleges can begin to specialise in their offerings around particular course selections. National Curriculum Guidelines dictate areas of studies for students in Year 11–12, regardless of the campus.

At Year 10 level, secondary students can begin to tailor their subject choices related to whether they wish to pursue a tertiary education after school, or whether they are opting for a vocational or training-based course to prepare them for entry to the workforce after Year 12.

Students in Year 11 and 12 progress with their study towards a Senior Secondary Certificate of Education which is recognised by all Australian universities and vocational and training institutions. It is also recognised by many international universities.

At Year 11 and 12, students again make choices from the range of subjects offered at their particular school. Advice is provided by staff at each secondary school, to students regarding progression through these last years of schooling to ensure best choices and opportunities for each student.

Some students undertake Vocational Educational and Training (VET) courses in schools. VET provides students with practical and work-related knowledge and skills.

At the end of Year 12, all students receive a Student Education Profile (SEP) which provides information about their achievements. Schools also offer a Record of School Achievement, another form of Student Education Profile for students who may attain leaving age, before completing Year 12.

The Student Education Profile is known by different names in different states, however, for students who complete Year 12; it is predominantly referred to as:

- Senior Certificate of Education WACE (West Australian Certificate of Education)
- Senior Certificate of Education SACE (South Australia)
- Higher School Certificate of Education HSC (New South Wales)
- Certificate of Education QCE (Queensland)
- Certificate of Education SACE (South Australia)
- Certificate of Education TCE (Tasmania)

In addition to the Senior Certificate of Education issued to Year 12 students, for those students who wish to continue into tertiary study, they also receive a rating for entrance into university. It is now common throughout Australia – with the exception of Queensland – that students wishing to proceed to tertiary study will receive a ranking against all other students completing secondary school. This ranking is referred to as ATAR (Australian Tertiary Admissions Rank). The ATAR score ranges from 1–100 with 100 being the highest achievement possible.

Queensland does not award an ATAR score but rather an OP Score (Overall Performance). These scores range from 1–25 with 1 being the highest achievement possible. OP scores can be cross-matched to ATAR scores where for example, a Qld student with an OP of 1 receives an ATAR equivalent ranking of 99.5. The OP score in Queensland can also be referred to as the TES (Tertiary Entrance Score).

For details on assessment of overseas qualifications for university entrance go to [www.internationaleducation.gov.au](http://www.internationaleducation.gov.au)

# National curriculum

In recent years, there have been policy changes within education in Australia. Until 2011, States were largely and independently responsible for developing and offering curricula throughout their schools. Since 2012, there has been a significant shift in autonomy in the States in that a unified national focus is being adopted by all States and Territories under the direction of ACARA.

ACARA – the Australian Curriculum Assessment Reporting Authority directs the implementation of a national curriculum throughout Australian schools. This Authority provides commonality in curriculum being offered in this country and a framework for National Assessment.

Each State and Territory remains responsible for the implementation of these new initiatives in their own regions.

Currently, English, Mathematics, Science, History and Geography, from Foundation level (previously referred to as Prep level in some states) to Year 10, are being implemented across Australia in all Government Schools.

The second phase of implementation will address Languages and The Arts in 2014 and 2015. The third and final phase of implementation will address the curriculum areas of Health & Physical Education, Technologies, Economics and Business and Civics and Citizenship.

Progressive up-dates on schedules for implementation are available on the ACARA website: [www.australiancurriculum.edu.au](http://www.australiancurriculum.edu.au)

ACARA also maintains responsibility for the Assessment and Reporting Framework and information on national testing and reporting can be accessed on the National Assessment Programme website: [www.nap.edu.au](http://www.nap.edu.au)

In both Curriculum implementation and in Assessment and Reporting, non-Government schools also have access to the new national guidelines. These initiatives are generally being adopted throughout both the Government and Non-Government sectors however, in the latter case, there are additional options for degrees of flexibility.



# Alternative Curriculum

## International Baccalaureate Programme

Australia is one of the 150 countries across the world offering the International Baccalaureate Programme which has international recognition and defines the curriculum delivered at all levels from Primary through Secondary and to University Entrance level.

In addition to the IB programme defining the curricula, the pedagogy and methods of curriculum delivery tend to focus on enquiry-based learning requiring responsible involvement by students in their learning pathways.

The assessment framework used within the International Baccalaureate Programme extends beyond nationally delivered assessments. By using common international bench-marking and assessments separate to those delivered in any country, this allows students to gain scores that allow comparison within their international framework. As a result, students are able to move from one IB programme in any country to a comparative IB programme in another country at their appropriate level.

In many cases, schools offering sections of the IB Programme will also continue to offer the Australian Curriculum throughout their school. A student would enroll in either the Australian Curriculum section of the school, or the IB section of the school, but not both.

The four IB programmes are for students aged 3–19 years of age and aim towards helping develop the intellectual, personal, emotional and social skills to live, learn and work in a rapidly globalising world. It is particularly relevant useful for students planning to study at university in another country after living in Australia.

The programmes can be offered individually or as a continuum, however, many schools in Australia only offer some of the programmes with the Diploma program being the most popular.

PYP – The Primary Years Programme for students aged 3 to 12 focuses on the development of the whole child in the classroom and in the world outside.

MYP – The Middle Years Programme for students aged 11 to 16 provides a framework of academic challenge and life skills, achieved through embracing and transcending traditional school subjects.

DP – The Diploma Programme for students aged 16 to 19 is a demanding two-year curriculum leading to final examinations and a qualification that is welcomed by leading universities around the world.

IBCC – The IB Career-related Certificate (16–19 year old) is for students between 16 and 19. This Certificate increases access to an IB education and is specially designed to provide a flexible learning framework that can be tailored by the school to meet the needs of the students.

For further details on the IB and schools offering it in Australia, [www.ibo.org](http://www.ibo.org)



## Comparison between the IB Programme and the Australian Curriculum

IB Programmes	Australian Curriculum
Internationally standardised and accepted curriculum.	Working towards a Nationally standardised curriculum through ACARA Progressive roll-out for implementation continuing from 2012. Some minor State variation and some variation amongst Independent and Catholic schools.
World-wide Examinations twice yearly (May and November). All examinations, grading and marking are standardised world-wide.	NAPLAN national assessments for all students – Years 3, 5, 7 and 9 with moderated frameworks for all marking / grading to allow comparison across all States / Territories and across all education providers.
The IB Diploma is issued by IB Headquarters in Geneva, Switzerland and is especially designed to provide admission to universities world-wide. The IB Diploma has absolute international credibility. Some international universities consider direct entry to 2nd year in some faculties.	University Entrance assessments are known by different terms in each State or Territory. There are conversion tables available to establish commonality between student scores from different States, allowing comparative University Entrance scores to all Universities.
Curriculum can be delivered in languages other than English in IB programmes in limited circumstances.	Most schools in all sectors offer Languages study within their curriculum of Languages Other Than English (LOTE). Specific languages (LOTE) are offered by individual schools according to individual school resourcing.

## Fee Structures for the Baccalaureate Programme

In Australia – IB programmes are offered more typically through the private sector of education and as such, associated fees are absorbed within their general fee structure, however there is often an additional loading for a Baccalaureate student (usually associated with assessments and examinations). IB programmes in the private sector are available to all fee-paying students.

IB programmes often form a basis for curriculum delivery in International Schools in Australia, and these schools provide an additional option within the Private Sector.

There are State schools offering the IB programme in all states and territories and whilst these schools are only available in some locations, the extent of State offerings of the IB programmes are increasing, particularly in southern states. Additional fees are generally payable for the IB at government schools.

For a full list of IB schools in Australia, both State and private including the levels of programmes offered at each school, refer to the website [www.ibo.org/country](http://www.ibo.org/country)

# Additional Details

## Specialist Schools and Programmes

Some State schools focus on a particular area of learning e.g. The Arts, Sciences, Sport. In addition some general schools have special programmes within their school curricula for talented students in areas such as sports, music, dance, languages, IT etc.

These schools can be referred to as Schools of Excellence and acceptance into these programmes is available to all, but selected on achievement and performance in the particular area.

## Selective High Schools

Selective schools are government high schools that accept their students based upon their academic merit.

Entry is limited and each year more than four or five times the number of students sit the exams than gain places for first year entry in Year 7. For entry in Years 8 to 12 students do not take an external test, but apply directly to a school. 457 Visa holders are not generally eligible to attend Selective High Schools.

## Special Needs Schools

There are Special Needs Schools for children with disabilities (Hearing Impairment, Visual Impairment, ASD, Physical Impairment, Intellectual Impairment and in some States, Speech Language Impairment) in both the Government and Private Sectors.

Some general schools have programmes for Special Needs students on their campuses.

For more information go to the website for Department of Education in each state (see Annexure A) or [www.australianschoolsdirectory.com.au](http://www.australianschoolsdirectory.com.au)  
[www.deafchildrenaustralia.org.au](http://www.deafchildrenaustralia.org.au)  
[www.ridbc.org.au](http://www.ridbc.org.au)

## Home Schooling

State Education Departments offer a framework for Home Schooling students from Prep to Year 12. These programmes follow the rigour of a school-delivered curriculum. They have a significantly higher fee component for this service (with State variation) compared with a student attending a State school. Home Schooling can be accessed according to family preference or when circumstances mean the student will be continually shifting their base location.

Families need to make application for Home Schooling through their State Department of Education who maintain a Registration Authority for home-schooled children. This authority monitors their academic work. A student being home-schooled can progress through to their final Senior Certificate, with a Tertiary Admission Rank for university entrance.

For details of Home Schooling and the registration process, refer to the State School websites in Appendix A.

In addition to the option of Home Schooling, students in all States have government schools of Distance Education. Qld, NSW and WA also have non-government schools of distance education. If registered with a School of Distance Education, these students have access to teachers and resources (unlike the home-schoolers). Progress for these students is monitored by the State departments. Enquiries would need to be directed to particular State departments.

Home Education Association website [www.he.edu.au](http://www.he.edu.au)

## Uniform

Most schools expect students to wear uniforms. They are unique to each school and are at an additional cost to school fees. Uniforms for government schools are generally simpler and less expensive than those for private schools.

Most schools have a uniform shop that sells new and second hand items.

Due to the climate, hats play an important part of life in Australia. Primary schools have a “no hat, no play” policy. Which means a child without a hat must remain inside during lunch and recess, and not go outside in the play ground.

## School Lunches

The majority of schools do not provide free school lunches. Most students take a packed lunch and a mid morning snack.

Schools often have a canteen staffed by parents on a voluntary basis and these increasingly have an emphasis on providing healthy foods. Many of these require the student to pre-order their meal in the morning for collection at lunch time.

## Sport

There is great emphasis placed on sport in Australia and most students participate in sport at school at least one day each week. In primary school this is generally organised within school hours but in high school and particularly at private school, sport is often compulsory with competitions held on Saturday.

In addition to school sport, students may join clubs outside school. Two of the most popular are Little Athletics [www.littleathletics.com.au](http://www.littleathletics.com.au) and Nippers (Surf Lifesaving) [www.surflifesaving.com.au/get-involved/nippers](http://www.surflifesaving.com.au/get-involved/nippers).

There are also government schools that combine the standard curriculum with focused sport development programmes. For details see the individual state education websites in the Annexure.

## Term Dates

The school year usually runs from late January to mid December. It is divided into two semesters, with two terms in each and vacation breaks for Easter, Winter, Spring and Summer. All Government schools follow pre-determined dates for holidays/term times; however, there is variation within a week or two between States. Private schools generally match State school schedules with variation of up to a week or two in length.

Holidays	Month	Duration
Summer	December/ January	6–8 weeks
Easter/Autumn	April	2 weeks
Winter	June/July	2 weeks
Spring	September/ October	2 weeks



# Fees for 457 Visa Holders

In some States fees are payable by 457 visa holders to attend government schools.

## NSW (2014)

[www.detinternational.nsw.edu.au/media-assets/trp/fees.pdf](http://www.detinternational.nsw.edu.au/media-assets/trp/fees.pdf)

Years	School Level	Fee
Years K – 6	Primary School	\$5,000
Years 7–10	Junior High School	\$5,000
Years 11–12	Senior High School	\$6,000

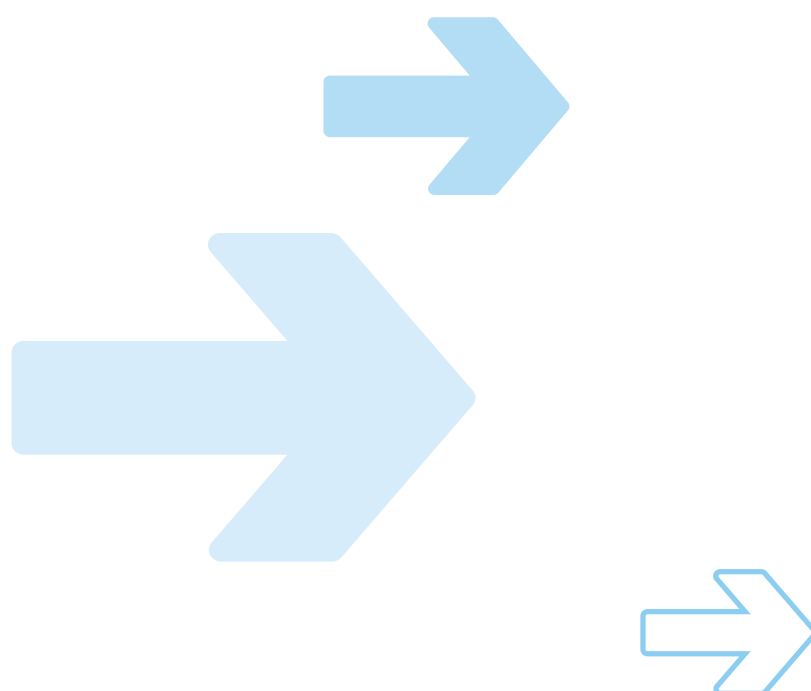
## ACT (2014)

[www.det.act.gov.au/\\_data/assets/pdf\\_file/0008/494693/2014-Application-Form-for-Temporary-Residents.pdf](http://www.det.act.gov.au/_data/assets/pdf_file/0008/494693/2014-Application-Form-for-Temporary-Residents.pdf)

Years	School Level	Fee
Preschool	Kindergarden	\$3,800
Years K – 6	Primary School	\$9,900
Years 7–10	Junior High School	\$13,300
Years 11–12	Senior High School	\$14,800

## WA

Effective from 2015 a tuition fee of \$4,000 per annum (\$1,000 per term) will apply to a family's first child enrolled in the State education system and \$2,000 each for second and subsequent children from the same family [www.det.wa.edu.au](http://www.det.wa.edu.au)



# Making a choice

The decision about which school is suitable for your child will be partly governed by your preference based on comparisons of alternatives previously outlined, but will also be determined by your final residential location in Australia and access to schooling.

Direct contact with any of the schools you are considering in your locale will help to clarify the suitability of any school for your purposes.

The website [www.myschool.edu.au](http://www.myschool.edu.au) can be viewed to establish the names of schools in your geographic area, and can also provide additional data about the school that may help you make choices.

Schools – both Public and Private – in all States/Territories in Australia will be able to advise incoming prospective enrolments of required procedures and accessibility.

Most capital city government schools require you to be residing in the “zone” for that school before you can make an application.

# Challenges

- In the capital cities many private schools are full and have waiting lists. Priority is not given to new arrivals to Australia. It is particularly difficult to obtain places in year 5 and 7 as these are major intake years for many private schools.
- Some government schools are also full and do not accept new students even if they are residing the school zone.
- It is preferable to contact the local school prior to signing a lease to ensure there are vacancies.
- Many government schools will not give you a school tour until you have leased a property in the zone.
- Pre-school places in most cities are at a premium and many have waiting lists.





# Enrolment Process

Given the requirement for children between 6 and 17 years to attend school in Australia, it is the responsibility of the parent to approach a school to arrange a place for any dependent children.

Enquiries may be made prior to arrival and settling in Australia for private schools but government schools generally prefer enquiry once families have a residential address.

As there is significant variation in procedures for enrolling your child in a school in different States it is preferable to contact each school direct for details on the enrolment procedures.

## Useful Documentation

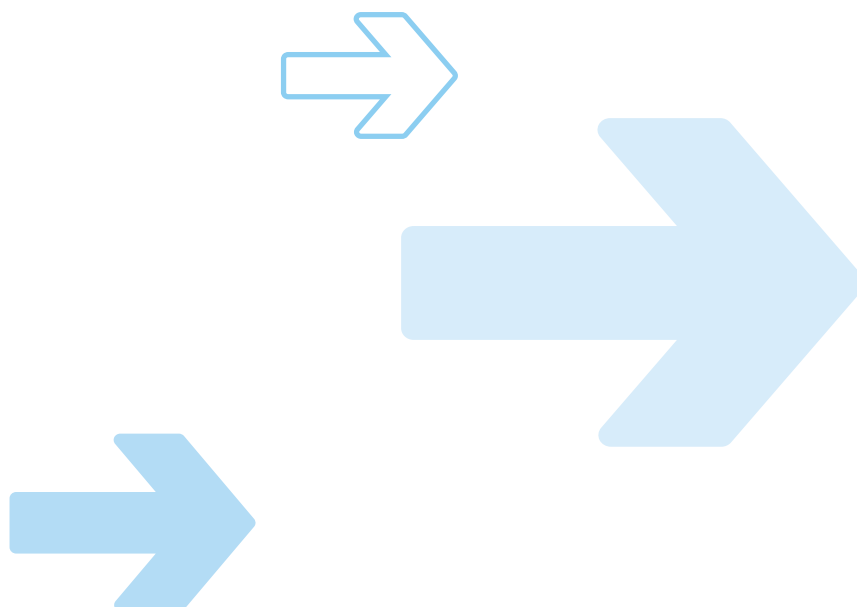
- Birth certificate
- Passport showing visa status
- School reports, examination results, work samples
- Proof of baptism
- Copy of property lease or evidence of residency

# Crown School Search

Crown Relocations understand that choosing a school for your child is every parent's major concern in the relocation process, and critical to the success of an international assignment.

Crown's School Search programme is designed to provide an objective overview of the education system in the host location, in-depth local information on all available education options and introduction to schools appropriate to your child's needs. Crown School Search programs are always tailored to meet individual needs and typically include:

- Pre-arrival needs analysis
- Overview of education system
- Coordination of school appointments
- Coordination of school interviews
- Assistance with enrolment process (where applicable)
- Coordination of home search in conjunction with school search to ensure a smooth relocation.



# Appendix A

For information about specific State and Territory public school education and training policies and procedures including school starting ages, curriculum information/ programmes and fees visit the relevant State or Territory authority websites:

**NSW** – Department of Education and Training, New South Wales [www.det.nsw.edu.au](http://www.det.nsw.edu.au)

**ACT** – Education & Training Directorate, Australian Capital Territory [www.det.act.gov.au](http://www.det.act.gov.au)

**NT** – Department of Education and Training, Northern Territory [www.det.nt.gov.au](http://www.det.nt.gov.au)

**WA** – Department of Education and Training, Western Australia [www.det.wa.edu.au](http://www.det.wa.edu.au)

**SA** – Department of Education and Children’s Services, South Australia [www.decd.sa.gov.au](http://www.decd.sa.gov.au)

**QLD** – Department of Education, Training and Employment, Queensland [www.deta.qld.gov.au](http://www.deta.qld.gov.au)

**TAS** – Department of Education, Tasmania [www.education.tas.gov.au](http://www.education.tas.gov.au)

**VIC** – Department of Education and Early Childhood Development [www.det.vic.gov.au](http://www.det.vic.gov.au)

For information on Australian Schooling (Federal based information) – go to the Australian Department of Education – [www.education.gov.au](http://www.education.gov.au)

Information on specific non-government or Private Sector education – please see websites:

## Catholic Education

For general information and links to each state catholic education office go to [www.ncec.catholic.edu.au](http://www.ncec.catholic.edu.au)

## Independent School Groups

For further information on individual school policies – refer to the My School website for particular additional information – [www.myschool.edu.au](http://www.myschool.edu.au) or [www.australianschoolsdirectory.com.au](http://www.australianschoolsdirectory.com.au)

## Australian Curriculum

If seeking further detail on the Australian Curriculum – refer to [www.australiancurriculum.edu.au](http://www.australiancurriculum.edu.au)







[www.crownrelocations.com.au](http://www.crownrelocations.com.au)

© 2017 Crown Relocations. All rights reserved.  
EG-AUS-CR/JUL-2017/GMO/EN/V1.0